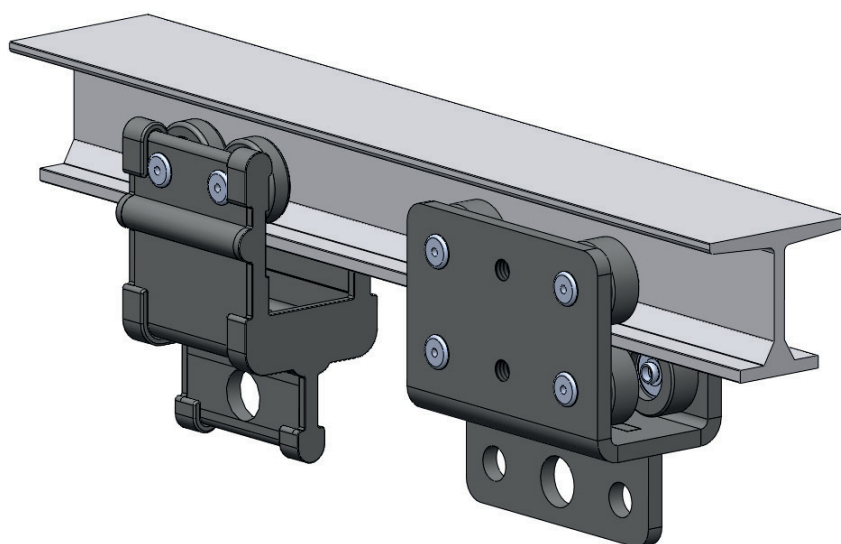




KOMPAS SYSTEM

DATA SHEET



EDITION: 2025 - REVIEW: 06

© 2025 - PERONI S.P.A.

All rights reserved.

The information and illustrations contained in this document may not be used,
published or redistributed in any form without the prior written consent of Peroni S.p.A.

Subject to technical modifications without prior notice and errors excepted.

Illustrations of the product in this manual may differ from the actual product.

The colour of technical drawings is for illustration purposes only.

NOTE:

All units are in millimeters unless otherwise indicated.

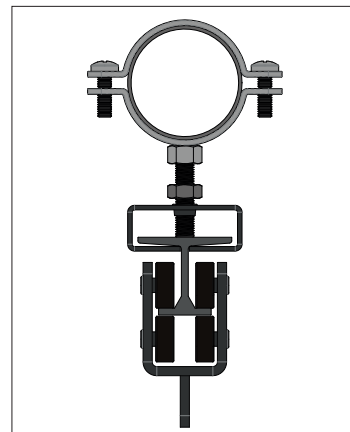
INTRODUCTION

KOMPAS is the entry-level solution in our range of track systems for opening medium-lightweight Traveler curtains, cycloramas, and suspended scenic elements.

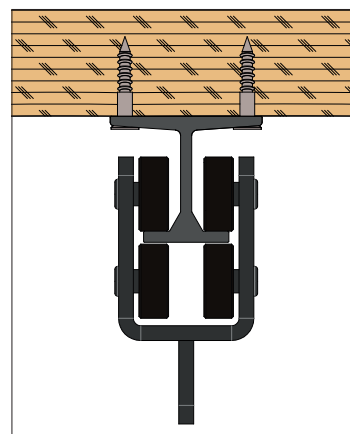
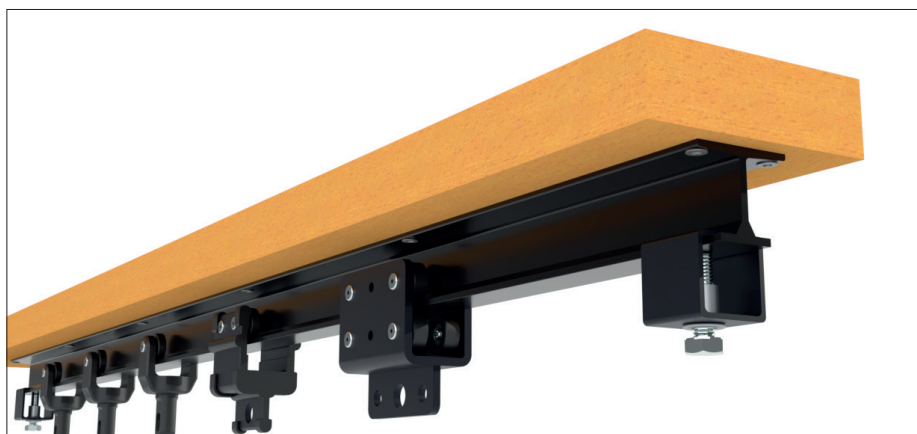
It is designed for simple configurations where a compact, economical, and easy-to-install system is required.

The aluminum track is available in two versions:

- **1KB standard profile** for installation on pipes or trusses



- **1KBP pre-drilled profile**, with regularly spaced holes for direct ceiling mounting, especially suitable for wooden supports



The system can be operated in two different ways:

- **Walk-along**, compatible with both straight and curved tracks
- **Side cord operation**, available only for straight-track configurations

In the side cord configuration, the system uses a single track for both wipe or traveler curtain movements.

Center overlap is achieved using dedicated arms mounted on the master carriers, allowing for approximately 50 cm of fabric overlap.



The side cord system is designed for straight layouts up to 12 meters long.

KOMPAS is not compatible with motorized operation.

For more complex layouts or when greater flexibility or motor integration is required, we recommend the **TRX line**, designed to meet more advanced technical requirements.

TECHNICAL SPECIFICATIONS

TRACK LOAD CAPACITY

| Span [cm] |  Centre Point Load [kg] |  Uniformly Distributed Load | |
|-----------|---|--|-----------------------|
| | | Total Load [kg] | Load per meter [kg/m] |
| 100 | 63 | 70 | 70 |
| 125 | 51 | 58 | 46 |
| 150 | 39 | 53 | 35 |
| 175 | 25 | 40 | 25 |
| 200 | 15 | 25 | 13 |

The table presents data for the maximum allowable loads applicable to the track only. When calculating the allowable loads listed in the table, it is assumed that the track is simply supported at the end connection. Please note that these are idealized loading conditions and these values are to be considered as indicative.

The track, the carriers and all suspending components are load bearing elements of the system and the load capacity of each component must be taken into account. Keep in mind that the overall load capacity of the system is determined by its weakest element.

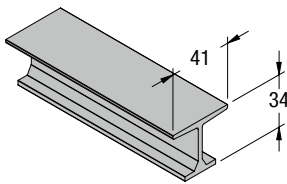
It's essential to also consider the suitability and load-carrying capacity of the supporting structures (such as walls, ceilings, bars, trusses).

COMPONENTS LOAD CAPACITY

| Art. | Description | WLL Working Load Limit [kg] |
|------|--------------------|--------------------------------|
| 1KM | Master Carrier | 20 |
| 1T09 | Master Carrier | 20 |
| 1KC | 4-Wheel Runner | 20 |
| 1T13 | 2-Wheel Runner | 10 |
| 1KAS | Suspension Bracket | 40 |
| 8C | Pipe Collar | 100 |

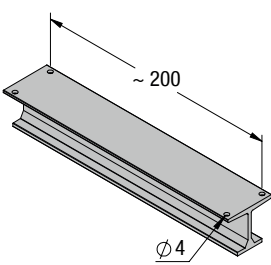
COMPONENTS AND ACCESSORIES

TRACKS



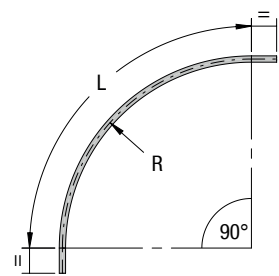
1KB · STRAIGHT TRACK

| INFO | | FEATURES |
|------------------|---------|---|
| WEIGHT | 780 g/m | <ul style="list-style-type: none">· Extruded aluminium profile, black anodised· Available in full length bars or custom cuts |
| MAX BAR LENGTH | 600 cm | |
| MAX SPAN | 200 cm | |
| MIN CURVE RADIUS | 30 cm | |



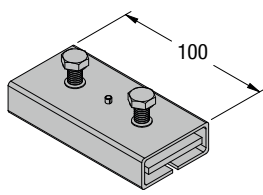
1KBP · PRE-DRILLED STRAIGHT TRACK

| INFO | | FEATURES |
|------------------|---------|---|
| WEIGHT | 770 g/m | <ul style="list-style-type: none">· Extruded aluminium profile, black anodised· Pre-drilled holes spaced at 200 mm, Ø4 mm holes· Available in full length bars or custom cuts |
| MAX BAR LENGTH | 600 cm | |
| MAX SPAN | 200 cm | |
| MIN CURVE RADIUS | 30 cm | |



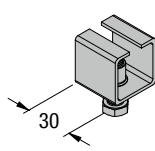
1KBC/1KBCP · CURVED TRACK

| INFO | | R | L | WEIGHT | FEATURES |
|----------|-----------|-------------------------|--------|--------|---|
| 1KBC-050 | 90° Curve | 50 cm | 119 cm | 0,9 kg | <ul style="list-style-type: none">· 1KBC Standard track· 1KBCP Pre-drilled track |
| 1KBC-075 | 90° Curve | 75 cm | 158 cm | 1,2 kg | |
| 1KBC-100 | 90° Curve | 100 cm | 197 cm | 1,5 kg | <ul style="list-style-type: none">· Curved extruded aluminium profile· 20 cm straight terminal sections· Available in custom size |
| 1KBC-X | Custom | Custom radius and angle | | | |



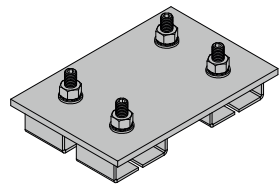
1KAG · JOINT SET

| INFO | FEATURES | FUNCTION |
|---------------------------------------|----------|---|
| COLOUR – Matt black WEIGHT – 342 g | | <ul style="list-style-type: none">· Joins two adjacent track sections to ensure continuity. |



1KS · END STOP

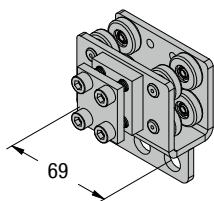
| INFO | FEATURES | FUNCTION |
|--------------------------------------|----------|--|
| COLOUR – Matt black WEIGHT – 65 g | | <ul style="list-style-type: none">· Stop the carriers at the ends of the track |



1KD · OVERLAP PLATE

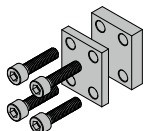
| INFO | FEATURES | FUNCTION |
|---------------------------------------|--|--|
| COLOUR – Matt black WEIGHT – 925 g | <ul style="list-style-type: none">· steel body· 4 supports 1KAS | <ul style="list-style-type: none">· Join and ensure parallel alignment between two track sections· Available while supplies last. |

CARRIERS



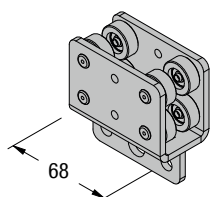
1KM · MASTER CARRIER

| INFO | FEATURES | FUNCTION |
|--|---|--|
| COLOUR – Matt black WEIGHT – 390 g WLL – 20 kg | <ul style="list-style-type: none"> · steel body · 8 ball bearing plastic wheels · c/w rope clamp | <ul style="list-style-type: none"> · Leading carrier for side cord operation · Rope clamp is also available as spare part (1KMF) |



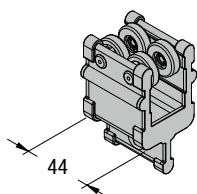
1KMF · ROPE CLAMP

| INFO | FEATURES | FUNCTION |
|----------------------------------|---|---|
| COLOUR – Silver WEIGHT – 62 g | <ul style="list-style-type: none"> · aluminium body · 2 plates included · c/w 4 screws | <ul style="list-style-type: none"> · Rope clamp for master carrier |



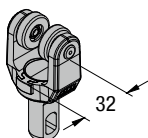
1T09 · MASTER CARRIER

| INFO | FEATURES | FUNCTION |
|--|---|--|
| COLOUR – Matt black WEIGHT – 330 g WLL – 20 kg | <ul style="list-style-type: none"> · steel body · 8 ball bearing plastic wheels | <ul style="list-style-type: none"> · Leading carrier for system without cord operation (walk-along) |



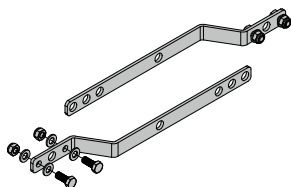
1KC · 4-WHEEL RUNNER

| INFO | FEATURES | FUNCTION |
|--|---|---|
| COLOUR – Matt black WEIGHT – 105 g WLL – 20 kg | <ul style="list-style-type: none"> · aluminium body · 4 ball bearing plastic wheels · plastic bumpers for impact noise reduction | <ul style="list-style-type: none"> · Sliding carrier |



1T13 · 2-WHEEL RUNNER

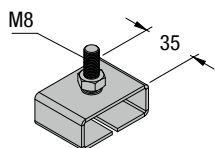
| INFO | FEATURES | FUNCTION |
|---|--|---|
| COLOUR – Matt black WEIGHT – 33 g WLL – 10 kg | <ul style="list-style-type: none"> · 2 ball bearing plastic wheels · rubber damper blocks · swivel attachment for curtain | <ul style="list-style-type: none"> · Sliding carrier |



1T14 · OVERLAP ARMS KIT

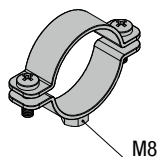
| INFO | FEATURES | FUNCTION |
|---|---|--|
| COLOUR – Matt black WEIGHT – 470 g WLL – 5 kg | <ul style="list-style-type: none"> · steel body · overlap arms (2 pcs) · screws, washers and nuts included | <ul style="list-style-type: none"> · Designed for side mounting on master carriers to achieve approximately 50 cm curtain overlap in a single-track configuration |

SUSPENSION PARTS



1KAS · SUSPENSION BRACKET

| INFO | FEATURES | FUNCTION |
|---|---|--|
| COLOUR – Matt black WEIGHT – 82 g WLL – 40 kg | <ul style="list-style-type: none"> · steel body · M8 special screw included | <ul style="list-style-type: none"> · Support bracket for suspending the track with 8C-50 collar · Also used to fix return pulleys to the track |



8C-50 · PIPE COLLAR

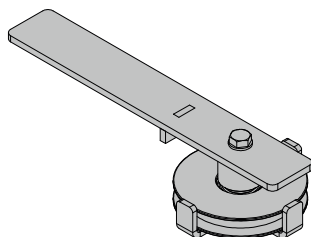
| INFO | FEATURES | FUNCTION |
|---|--|---|
| COLOUR – Zinc plated WEIGHT – 85 g WLL – 100 kg | <ul style="list-style-type: none"> · steel body · M8 nut | <ul style="list-style-type: none"> · Clamp for 50mm tube or truss · Used in combination with 1KAS |

ROPE AND PULLEYS



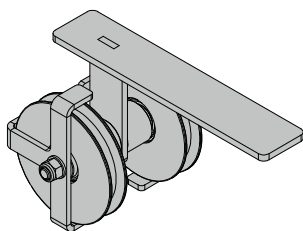
3E8 · POLYESTER ROPE

| INFO | FEATURES | FUNCTION |
|---|--|---|
| COLOUR – Matt black WEIGHT – 50 g/m REEL LENGTH – 200 m | <ul style="list-style-type: none"> · 8 mm diameter · 100% high tenacity polyester fiber · available in cut lengths or in reel | <ul style="list-style-type: none"> · Operating rope for manual or motorised system |



1KO · RETURN PULLEY

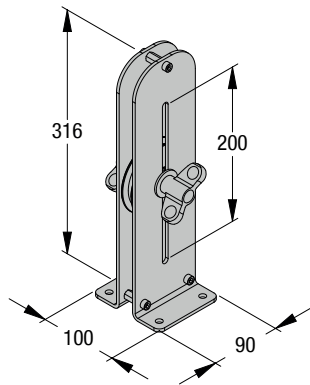
| INFO | FEATURES | FUNCTION |
|---------------------------------------|--|--|
| COLOUR – Matt black WEIGHT – 663 g | <ul style="list-style-type: none"> · steel body · diverting pulley with ball bearings · U-groove sheave for 8 mm rope | <ul style="list-style-type: none"> · Designed to divert the operating line back to 1KV2 head pulley · Mounted on the track using two 1KAS supports |



1KV2 · HEAD PULLEY

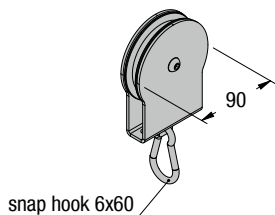
| INFO | FEATURES | FUNCTION |
|---------------------------------------|---|--|
| COLOUR – Matt black WEIGHT – 927 g | <ul style="list-style-type: none"> · steel body · 2 diverting pulleys with ball bearings · U-groove sheave for 8 mm rope | <ul style="list-style-type: none"> · Designed for bottom cord single track configuration to divert 90° downward the operating lines · Mounted on the track using two 1KAS supports |

6.4 · FLOOR PULLEYS



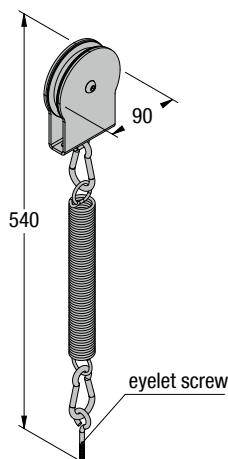
1Z01 · ADJUSTABLE FLOOR PULLEY

| INFO | FEATURES | FUNCTION |
|---|---|--|
| <p>COLOUR – Matt black WEIGHT – 2,1 kg EXCURSION – 200 mm</p> | <ul style="list-style-type: none"> · steel body · U-groove sheave for 8 mm rope · 2 wing knobs for quick adjustments · Ø8,5 mm holes to fix the pulley (ground fixing fasteners not included) | <ul style="list-style-type: none"> · Designed to manually operate the hauling line of corded systems · It allows for adjusting the tension of the rope |



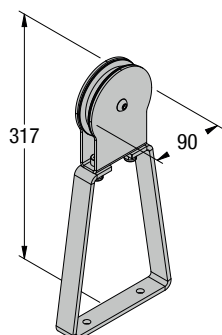
1Z02 · WEIGHT FLOOR PULLEY

| INFO | FEATURES | FUNCTION |
|---|---|--|
| <p>COLOUR – Matt black WEIGHT – 620 g WLL – 40 kg</p> | <ul style="list-style-type: none"> · steel body · diverting pulley with ball bearing · U-groove sheave for 8 mm rope · 6 x 60 mm snap hook included | <ul style="list-style-type: none"> · Single wheeled pulley equipped with a snap hook for attaching a ballast (not included), usually a 5 or 10 kg sandbag. · It is generally used where it is not possible to fix a permanent pulley to the floor. |



1Z03 · SPRING LOADED FLOOR PULLEY

| INFO | FEATURES | FUNCTION |
|---|--|--|
| <p>COLOUR – Matt black WEIGHT – 965 g</p> | <ul style="list-style-type: none"> · steel body · diverting pulley with ball bearing · U-groove sheave for 8 mm rope · Supplied as standard with eyelet screw for wooden floor fixing. | <ul style="list-style-type: none"> · Fixed floor pulley equipped with traction spring to maintain a constant tension on manual hauling line. · On request, it can be equipped with a different type of fixing screw. |



1Z04 · FLOOR PULLEY WITH FOOT STIRRUP

| INFO | FEATURES | FUNCTION |
|---|---|--|
| <p>COLOUR – Matt black WEIGHT – 1.179 g</p> | <ul style="list-style-type: none"> · steel body · diverting pulley with ball bearing · U-groove sheave for 8 mm rope · Ø8,5 mm holes to fix the pulley (ground fixing fasteners not included) | <ul style="list-style-type: none"> · Suspended pulley at floor level, with a stirrup tensionable by foot pressure. · Provided with two holes for floor fixing if needed. |



For more technical support,
please contact our corporate office.

PERONI S.P.A.
Via Monte Leone, 93
21013 Gallarate (VA) Italy
Tel. +39 0331 756811
Fax +39 0331 776260
email: info@peroni.com
www.peroni.com