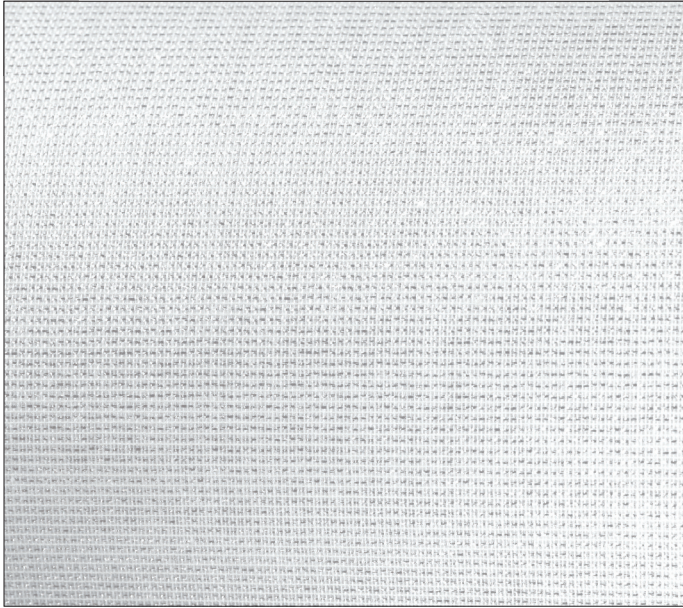
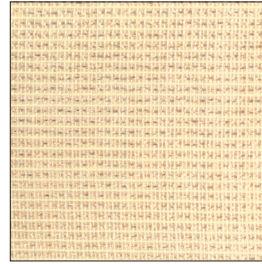


EVRR REFLEX

VOILE METALLIZZATO / METALLIC VOILE






01 - Argento / Silver



02 - Oro / Gold

| CODICE CODE | FORMATO FORMAT | LARGHEZZA WIDTH | LUNGHEZZA LENGTH | COMPOSIZIONE COMPOSITION | PESO WEIGHT |
|----------------|--------------------------------|--------------------|---------------------|--|---------------------|
| EVRR300P | Arrotolato <i>Rolled-up</i> | 300 cm | ± 60 m | Poliestere, Lurex <i>Polyester, Lurex</i> | 70 g/m ² |

| | | | |
|---|---|---|---|
| REAZIONE AL FUOCO <i>REACTION TO FIRE</i> |  | IGNIFUGO PERMANENTE È considerato permanentemente ignifugo per il suo intero ciclo di vita, anche se venisse bagnato o lavato. Il tessuto resiste al lavaggio in acqua, tuttavia si consiglia solo il lavaggio a secco professionale. | <i>IFR - INHERENTLY FLAME RETARDANT</i> It is considered to be permanently flame retardant for its lifetime, even if wet or washed. The fabric will withstand wet cleaning, but we suggest professional dry cleaning only. |
| CERTIFICATI DI IGNIFUGAZIONE <i>FR CERTIFICATIONS</i> |  | EN 13773 classe 1 UNI 9177 classe 1 NFP 92-503 classe M1 | EN 13773 class 1 UNI 9177 class 1 NFP 92-503 class M1 |
| DISPONIBILITÀ <i>AVAILABILITY</i> | | <ul style="list-style-type: none"> • A metro • Rotoli interi • Realizzazioni su misura | <ul style="list-style-type: none"> • By the metre • Full rolls • Custom-made creations |
| ISTRUZIONI PER IL LAVAGGIO <i>CARE INSTRUCTIONS</i> | |  | |