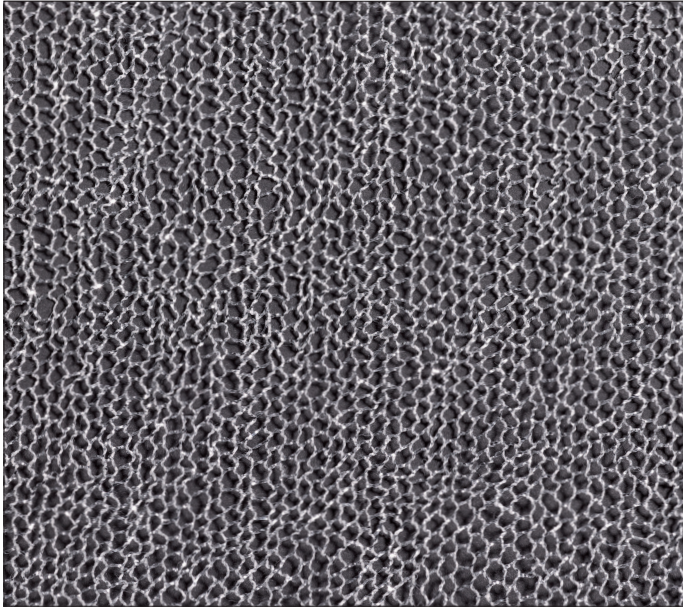
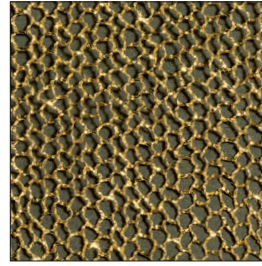


BRL REXOR

TULLE METALLIZZATO / METALLIC BOBBINET




01 - Argento / Silver



02 - Oro / Gold

| CODICE CODE | FORMATO FORMAT | LARGHEZZA WIDTH | LUNGHEZZA LENGTH | COMPOSIZIONE COMPOSITION | PESO WEIGHT |
|----------------|-------------------|--------------------|---------------------|---|---------------------|
| BRL850N | Piegato Folded | 860 cm ± 15 cm | ± 50 m | 67% Poliestere, 33% Cotone 67% Polyester, 33% Cotton | 50 g/m ² |

| | | | |
|-----------------------|---|---|---|
| MAGLIA MESH |  | Maglia esagonale L. 1,5 mm x H. 1,5 mm | Hexagonal mesh W. 1.5 mm x H. 1.5 mm |
|-----------------------|---|---|---|

| | | | |
|--|---|---|---|
| REAZIONE AL FUOCO REACTION TO FIRE |  | IGNIFUGO Trattamento ignifugante idrosolubile. Non resiste al lavaggio in acqua e deve essere preservato con l'uso e la conservazione dei tessuti in luoghi puliti, asciutti, aerati e protetti da calore, sole e intemperie. | FR - FLAME RETARDANT Water soluble fireproofing treatment. It doesn't withstand wet cleaning and it must be protected by the use and preservation of the fabrics in clean, dry, airy and protected from heat, sun and bad weather places. |
|--|---|---|---|

| | | | |
|--|---|--|--|
| CERTIFICATI DI IGNIFUGAZIONE FR CERTIFICATIONS |  | EN 13501-1 classe B s1 d0 UNI 9177 classe 1 | EN 13501-1 class B s1 d0 UNI 9177 class 1 |
|--|---|--|--|

| | | |
|--------------------------------------|--|--|
| DISPONIBILITÀ AVAILABILITY | <ul style="list-style-type: none"> · A metro · Pezze intere · Realizzazioni su misura | <ul style="list-style-type: none"> · By the metre · Full pieces · Custom-made creations |
|--------------------------------------|--|--|

| | |
|--|---|
| ISTRUZIONI PER IL LAVAGGIO CARE INSTRUCTIONS |  |
|--|---|