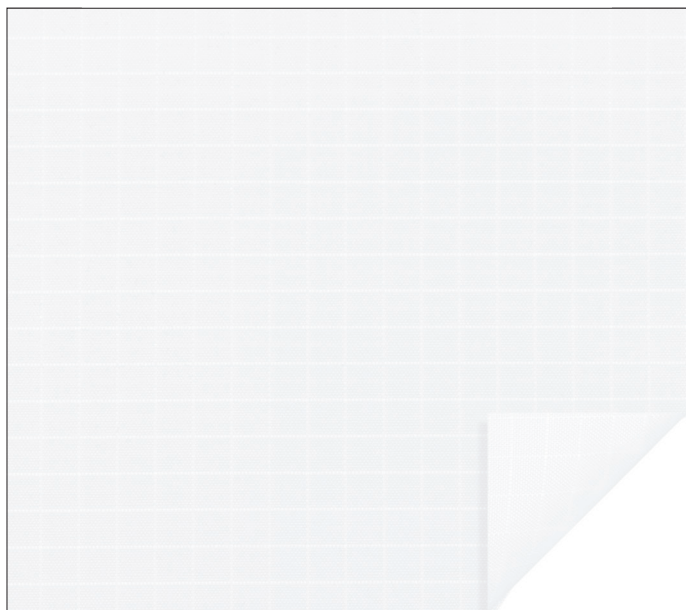
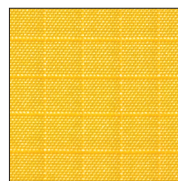


ASP SPI

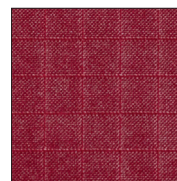
TESSUTO ANTISTRAPPO / RIPSTOP FABRIC



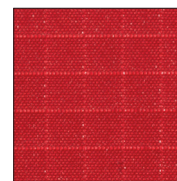
01 - Bianco / White



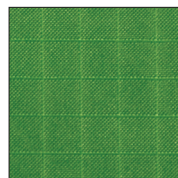
02 - Giallo / Yellow



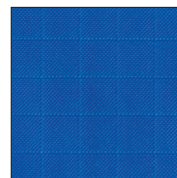
03 - Bordeaux



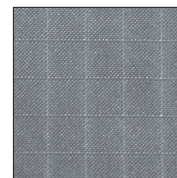
04 - Rosso / Red



05 - Verde / Green



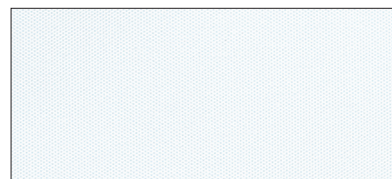
06 - Blu / Blue



07 - Grigio / Grey





99 - Nero / Black



ASP285P

01 - Bianco / White

CODICE CODE	COLORI COLOURS	LARGHEZZA WIDTH	LUNGHEZZA LENGTH	COMPOSIZIONE COMPOSITION	PESO WEIGHT
ASP150P	Tutti i colori All colours	160 cm	± 100 m	100% Poliestere 100% Polyester	90 g/m ²
ASP285P	Bianco White	285 cm			

TESSITURA WEAVING	ASP150P tessuto con fili antistrappo a campinatura incrociata ASP285P tessuto uniforme senza fili di rinforzo visibili	ASP150P with reinforcement threads interwoven in a crosshatch pattern ASP285P without visible reinforcement threads
REAZIONE AL FUOCO REACTION TO FIRE	 IGNIFUGO PERMANENTE È considerato permanentemente ignifugo per il suo intero ciclo di vita, anche se venisse bagnato o lavato. Il tessuto resiste al lavaggio in acqua, tuttavia si consiglia solo il lavaggio a secco professionale.	IFR - INHERENTLY FLAME RETARDANT It is considered to be permanently flame retardant for its lifetime, even if wet or washed. The fabric will withstand wet cleaning, but we suggest professional dry cleaning only.
CERTIFICATI DI IGNIFUGAZIONE FR CERTIFICATIONS	 EN 13501-1 classe B s1 d0 UNI 9177 classe 1 NFP 92-503 classe M1	EN 13501-1 class B s1 d0 UNI 9177 class 1 NFP 92-503 class M1
ALTRI CERTIFICATI OTHER CERTIFICATIONS	OEKO-TEX Standard 100 classe II	OEKO-TEX Standard 100 class II
DATI FISICO-MECCANICI PHYSICAL MECHANICAL DATA	ASP150P · EN ISO 9237 Permeabilità all'aria: 10-20 l/m ² /s pressione 200 Pa · EN ISO 13934-1 Resistenza alla trazione: ordito 600 N, trama 850 N · EN ISO 13934-1 Allungamento a rottura: ordito 59%, trama 35%	ASP150P · EN ISO 9237 Air permeability: 10-20 l/m ² /s pressure 200 Pa · EN ISO 13934-1 Tensile strength: warp 600 N, weft 850 N · EN ISO 13934-1 Elongation at break: warp 59%, weft 35%
	ASP285P · EN ISO 9237 Permeabilità all'aria: 80 l/m ² /s pressione 200 Pa · EN ISO 13934-1 Resistenza alla trazione: ordito 600 N, trama 700 N · EN ISO 13934-1 Allungamento a rottura: ordito 55%, trama 45%	ASP285P · EN ISO 9237 Air permeability: 80 l/m ² /s pressure 200 Pa · EN ISO 13934-1 Tensile strength: warp 600 N, weft 700 N · EN ISO 13934-1 Elongation at break: warp 55%, weft 45%
DISPONIBILITÀ AVAILABILITY	· A metro · Rotoli interi · Realizzazioni su misura	· By the metre · Full rolls · Custom-made creations
ISTRUZIONI PER IL LAVAGGIO CARE INSTRUCTIONS	